



Additional information:

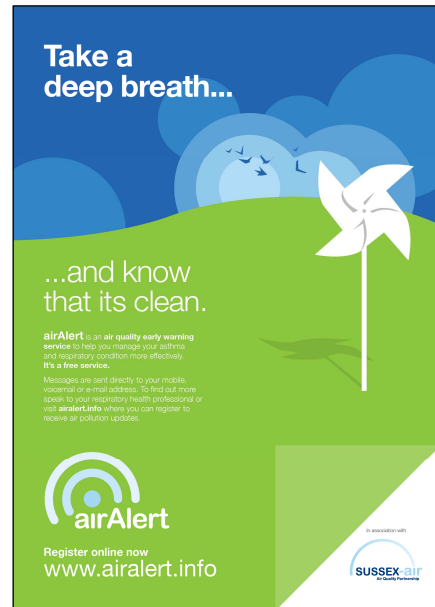
airAlert is an air pollution forecasting and warning service which informs vulnerable people that air pollution is increasing before an event occurs, so that they may manage their conditions appropriately. The service was piloted in Sussex (2006) and developed into a local authority lead service by Sussex Air Quality Partnership and is now available in Sussex, Hertfordshire, Bedfordshire, Southampton and Seven Oaks (from 2011) (www.airalert.info) .



Respiratory disease in UK.

Approximately 8 million people in the UK are affected by chronic lung diseases, most of these are either asthma or chronic obstructive pulmonary disease (COPD). Respiratory disease is the second most common illness responsible for emergency admission to hospital. There are an estimated one million admissions a year for respiratory disease in the UK suggests at a cost of £1,496.4 million to secondary care. Respiratory disease costs the NHS and society £6.6 billion, £3 billion in costs to the care system, £1.9 billion in mortality costs and £1.7 billion in illness costs. An estimated 24 million consultations with GPs were for respiratory disease in 2004 at a cost of £501 million to primary care.

Reference: www.sepho.org.uk/respiratorydisease.aspx



UK Population with Chronic Obstructive Pulmonary Disease (COPD).

Within the population of England of 55 million it is suggested that up to **4 million people have COPD**, but only **0.6 million people are diagnosed**. One in eight hospital admissions are for COPD which equates to 1000 admissions and 25,000 GP consultations per year in a typical PC. In 2000, the WHO estimated 2.74 million deaths worldwide from COPD, 14% of all deaths in the UK are due to lung disease. In the UK, COPD is the cause of death in 6.4% of men and 3.9% of women.

Reference: Department of Health Consultation on a Strategy for Services for Chronic Obstructive Pulmonary Disease (COPD) in England (2010)
http://www.dh.gov.uk/prod_consum_dh/groups/dh_digitalassets/@dh/@en/documents/digitalasset/dh_113279.pdf

Asthma in the UK

Asthma is a common disease - **5.4 million people** in the UK are currently receiving treatment for asthma: 1.1 million children (1 in 11) (21%) and 4.3 million adults (1 in 12)(79%) adults. On average there are two children with asthma in every classroom in the UK.

An estimated 75% of hospital admissions for asthma are avoidable and as many as 90% of the deaths from asthma are preventable. (Asthma UK).

Reference: www.lunguk.org and www.asthma.org.uk

London report on attributable deaths from air pollution (fine particulates) (2010).

The Greater London Authority commissioned a report into the estimated attributable deaths from air pollution, focusing on the impact of fine particulates (PM2.5) on the London population in 2008. The report estimated in 2008 that fine particulates have an impact on mortality equivalent to 4,267 deaths in London, within a range of 756 to 7,965.

Reference:
[http://www.cleanairinlondon.org/ attachments/4566108/CCAL%20098%20Mayor%20Health Study_Report%20June%202010.pdf](http://www.cleanairinlondon.org/attachments/4566108/CCAL%20098%20Mayor%20Health%20Study_Report%20June%202010.pdf)



airAlert research additional information

www.airalert.info

Sussex respiratory admissions in 2005.

Respiratory admissions in Sussex hospitals were recorded in 2005 in the Sussex database, the following admissions data identified those patients with general respiratory conditions including those with specific COPD and asthma conditions at admission.

- General respiratory admissions = 13,793
- COPD admissions = 2,496 (18%)
- Asthma admissions = 1,570 (11%)



Populations

Sussex = 1,563,000
London = 7,673,000 (2008)



Contact:

Nigel Jenkins – Project Manager for the Sussex Air Quality Partnership (Sussex-air) and airAlert.
nigel.jenkins@lewes.gov.uk, 01273 484 331, www.sussex-air.net & www.airalert.info